

This drawing has been prepared for the use of AECOM's client. It may not be used, modified, reproduced or relied upon by third parties, except as agreed by AECOM or as required by law. AECOM accepts no responsibility, and denies any liability whatsoever, to any party that uses or relies on this drawing without AECOM's express written consent. Do not scale this document. All measurements must be obtained from the stated dimensions.




**PROJECT**  
 EAST LoTHIAN COUNCIL  
 REVIEW OF REDUCED SPEED  
 LIMITS

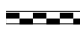
**CLIENT**



EAST LoTHIAN COUNCIL

**Legend**

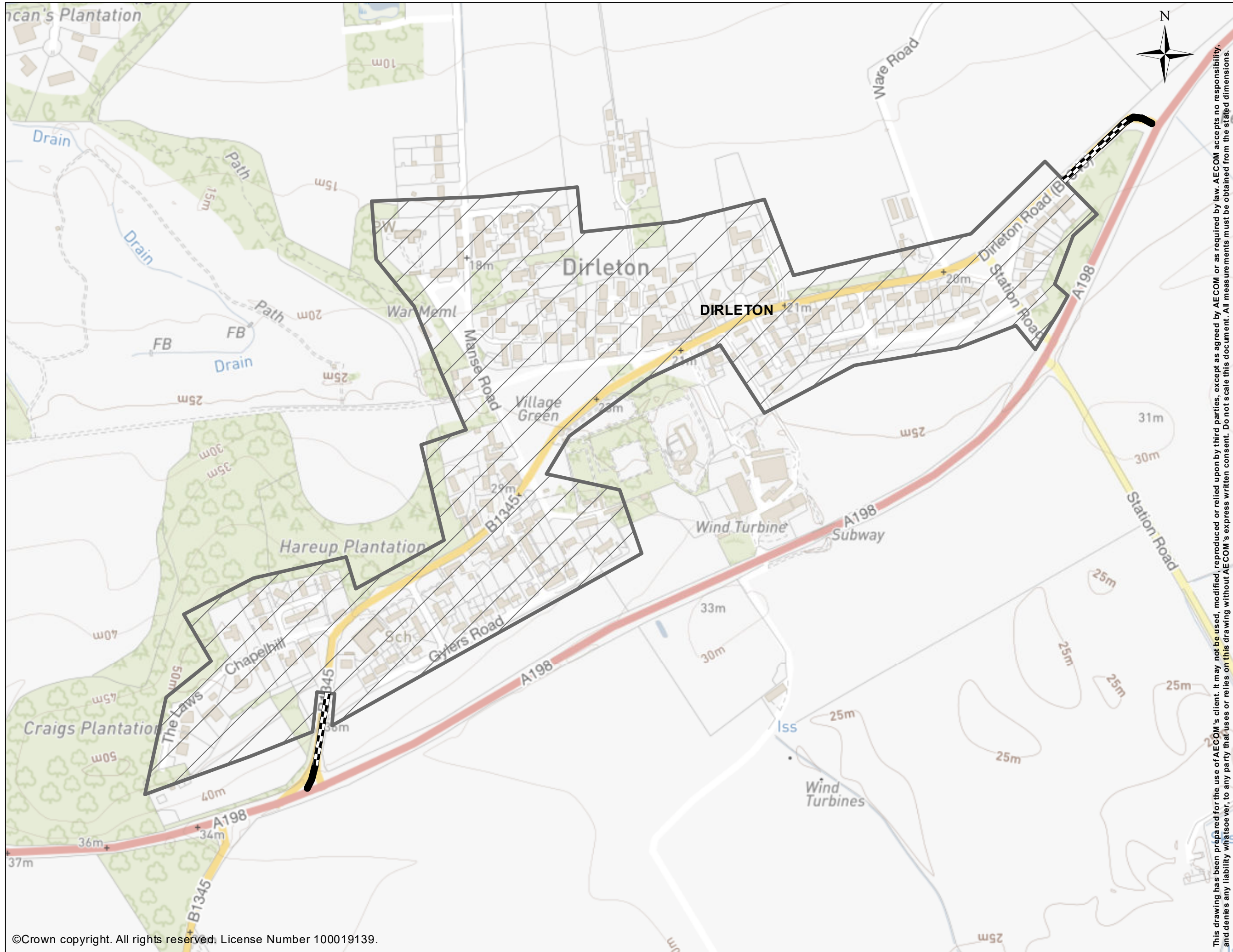
 20mph Speed Limit

 30mph Speed Limit

**PROJECT NUMBER**  
 60638144

**SHEET TITLE**  
 ABERLADY  
 NEW SPEED LIMITS





This drawing has been prepared for the use of AECOM's client. It may not be used, modified, reproduced or relied upon by third parties, except as agreed by AECOM or as required by law. AECOM accepts no responsibility, and denies any liability whatsoever, to any party that uses or relies on this drawing without AECOM's express written consent. Do not scale this document. All measurements must be obtained from the stated dimensions.


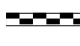

**PROJECT**  
 EAST LOTHIAN COUNCIL  
 REVIEW OF REDUCED SPEED  
 LIMITS

**CLIENT**



EAST LOTHIAN COUNCIL

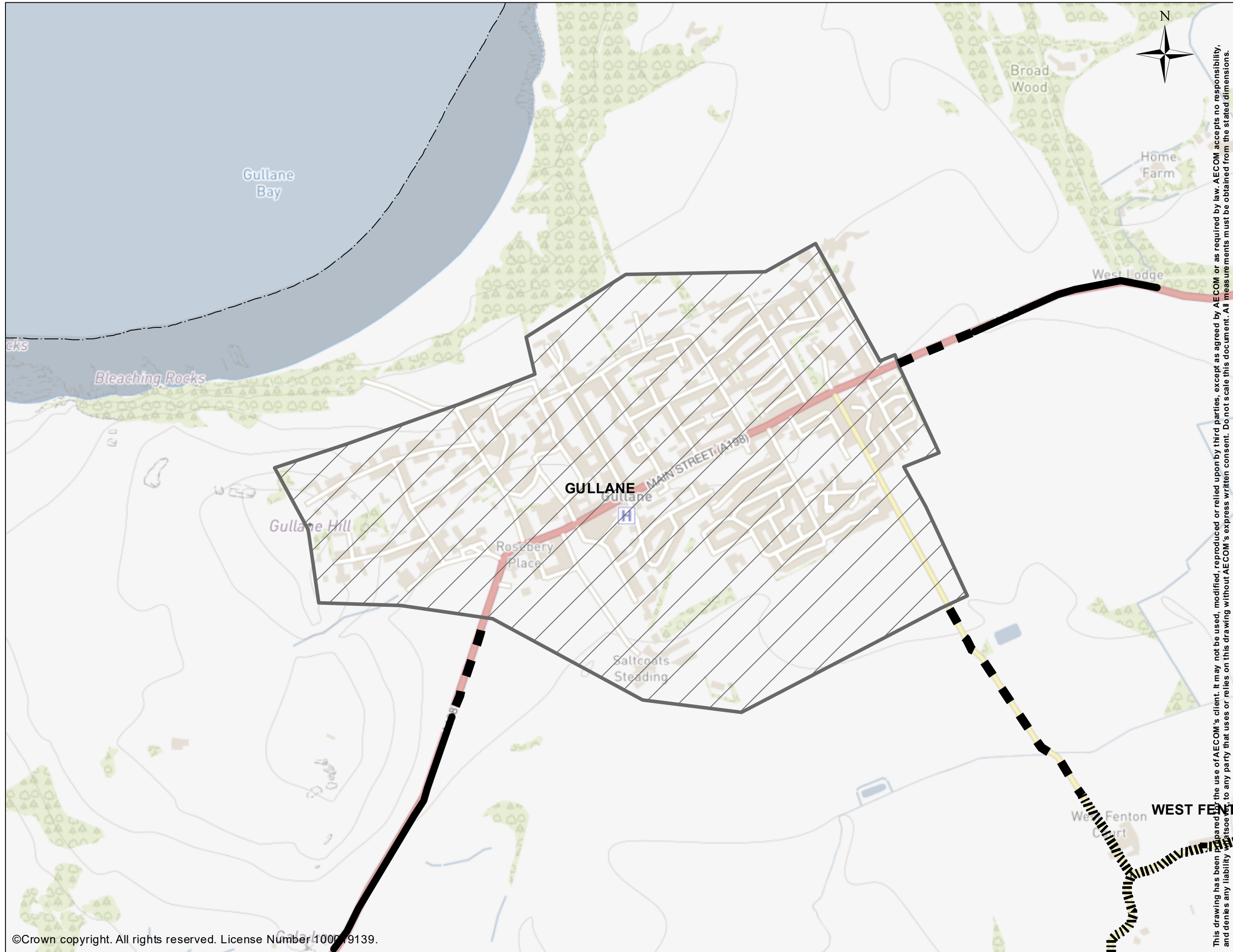
**Legend**

-  20mph Speed Limit
-  30mph Speed Limit
-  National Speed Limit

**PROJECT NUMBER**  
 60638144

**SHEET TITLE**  
 DIRLETON  
 NEW SPEED LIMITS





This drawing has been prepared for the use of AECOM's client. It may not be used, modified, reproduced or relied upon by third parties, except as agreed by AECOM or as required by law. AECOM accepts no responsibility, and denies any liability whatsoever, to any party that uses or relies on this drawing without AECOM's express written consent. Do not scale this document. All measurements must be obtained from the stated dimensions.

**PROJECT**  
 EAST LoTHIAN COUNCIL  
 REVIEW OF REDUCED SPEED  
 LIMITS

**CLIENT**



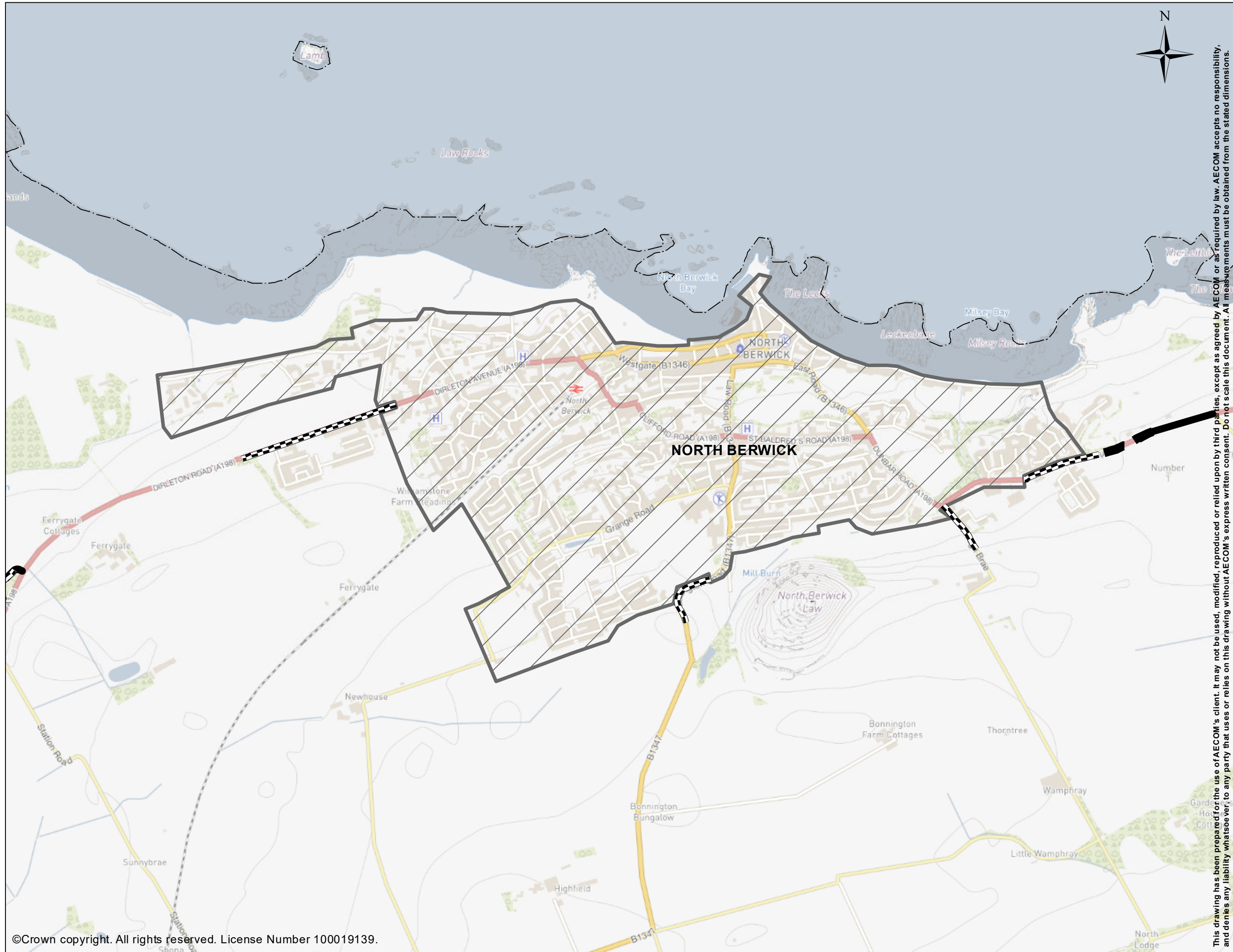
EAST LoTHIAN COUNCIL

- Legend**
-  20mph Speed Limit
  -  30mph Speed Limit
  -  40mph Speed Limit
  -  National Speed Limit
  -  Quiet Road
  -  ELC Local Authority Area

**PROJECT NUMBER**  
 60638144

**SHEET TITLE**  
 GULLANE  
 NEW SPEED LIMITS





This drawing has been prepared for the use of AECOM's client. It may not be used, modified, reproduced or relied upon by third parties, except as agreed by AECOM or as required by law. AECOM accepts no responsibility, and denies any liability whatsoever, to any party that uses or relies on this drawing without AECOM's express written consent. Do not scale this document. All measurements must be obtained from the stated dimensions.

**PROJECT**

EAST LOTHIAN COUNCIL  
REVIEW OF REDUCED SPEED LIMITS

**CLIENT**



EAST LOTHIAN COUNCIL

**Legend**

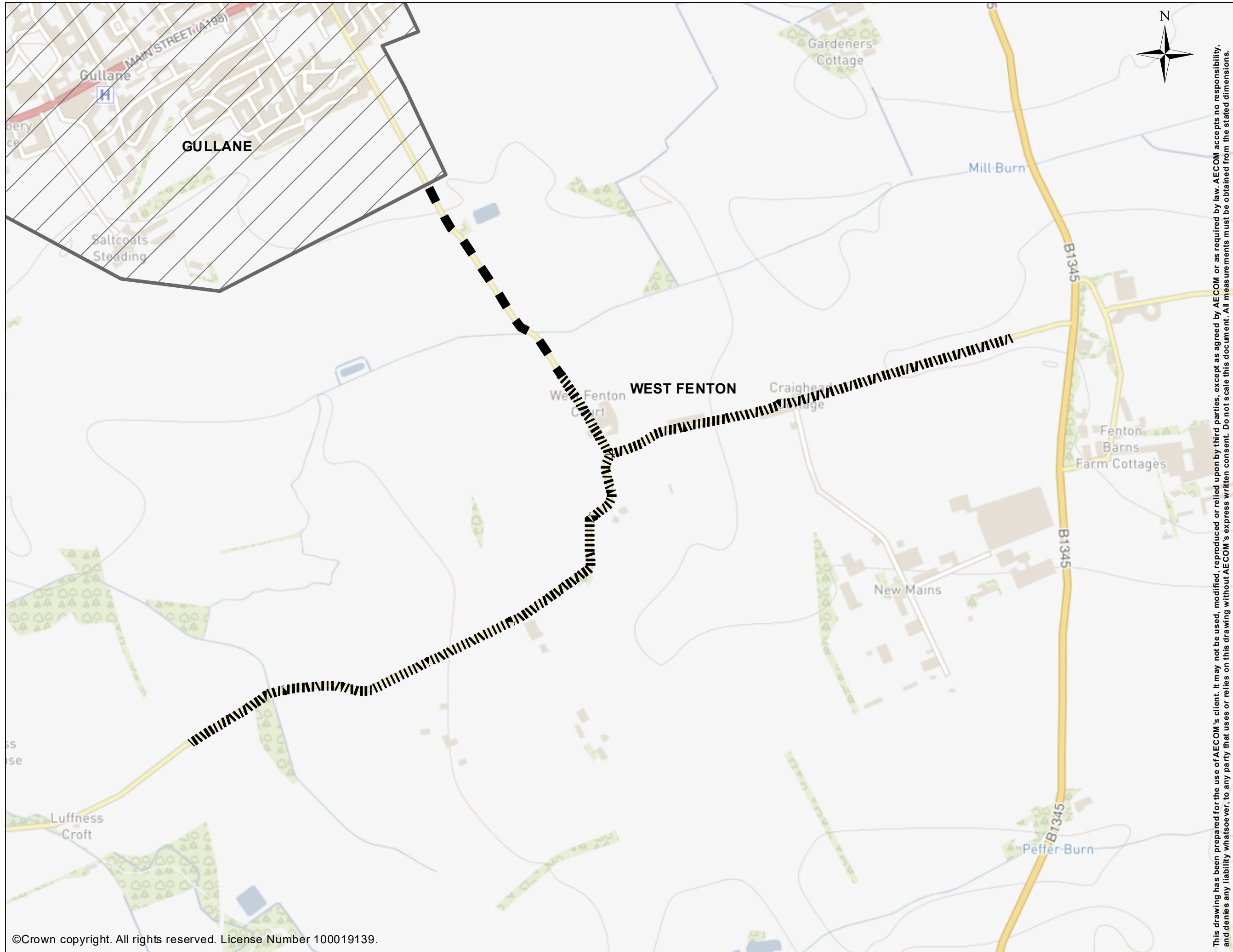
- 20mph Speed Limit
- 30mph Speed Limit
- 40mph Speed Limit
- National Speed Limit
- ELC Local Authority Area

**PROJECT NUMBER**

60638144

**SHEET TITLE**




NORTH BERWICK  
NEW SPEED LIMITS



This drawing has been prepared for the use of AECOM's client. It may not be used, modified, reproduced or relied upon by third parties, except as agreed by AECOM or as required by law. AECOM accepts no responsibility, and denies any liability whatsoever, to any party that uses or relies on this drawing without AECOM's express written consent. Do not scale this document. All measurements must be obtained from the stated dimensions.

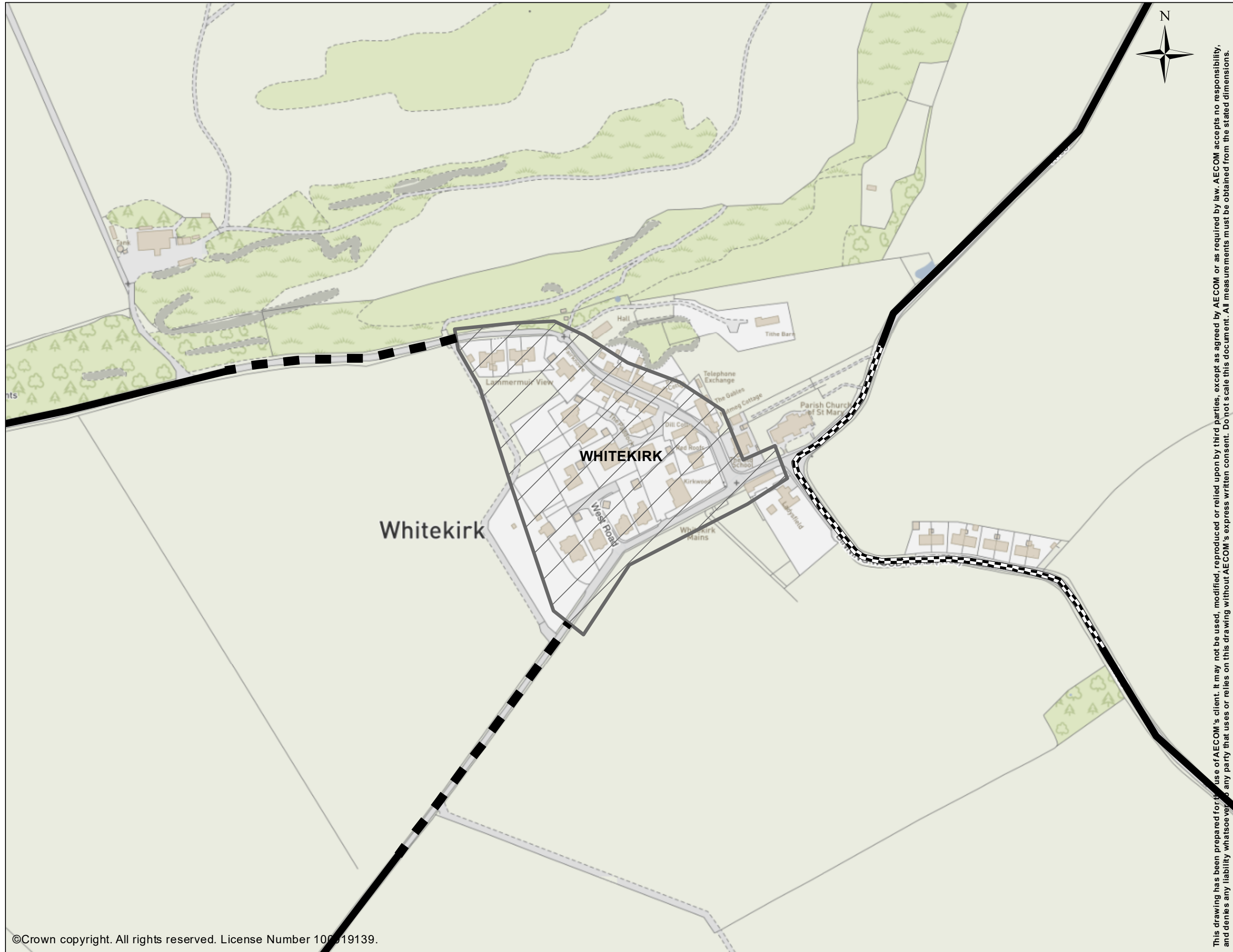
**PROJECT**  
EAST LOTHIAN COUNCIL  
REVIEW OF REDUCED SPEED  
LIMITS

**CLIENT**  
  
EAST LOTHIAN COUNCIL

**Legend**  
 20mph Speed Limit  
 40mph Speed Limit  
 Quiet Road

**PROJECT NUMBER**  
60638144  
**SHEET TITLE**  
WEST FENTON  
NEW SPEED LIMITS





This drawing has been prepared for the use of AECOM's client. It may not be used, modified, reproduced or relied upon by third parties, except as agreed by AECOM or as required by law. AECOM accepts no responsibility, and denies any liability whatsoever to any party that uses or relies on this drawing without AECOM's express written consent. Do not scale this document. All measurements must be obtained from the stated dimensions.





**PROJECT**  
 EAST LoTHIAN COUNCIL  
 REVIEW OF REDUCED SPEED  
 LIMITS

**CLIENT**



EAST LoTHIAN COUNCIL

**Legend**

-  20mph Speed Limit
-  30mph Speed Limit
-  40mph Speed Limit
-  National Speed Limit

**PROJECT NUMBER**  
 60638144

**SHEET TITLE**  
 WHITEKIRK  
 NEW SPEED LIMITS